

ALL UNDERGROUND UTILITIES  
SHOWN IN APPROXIMATE LOCATION

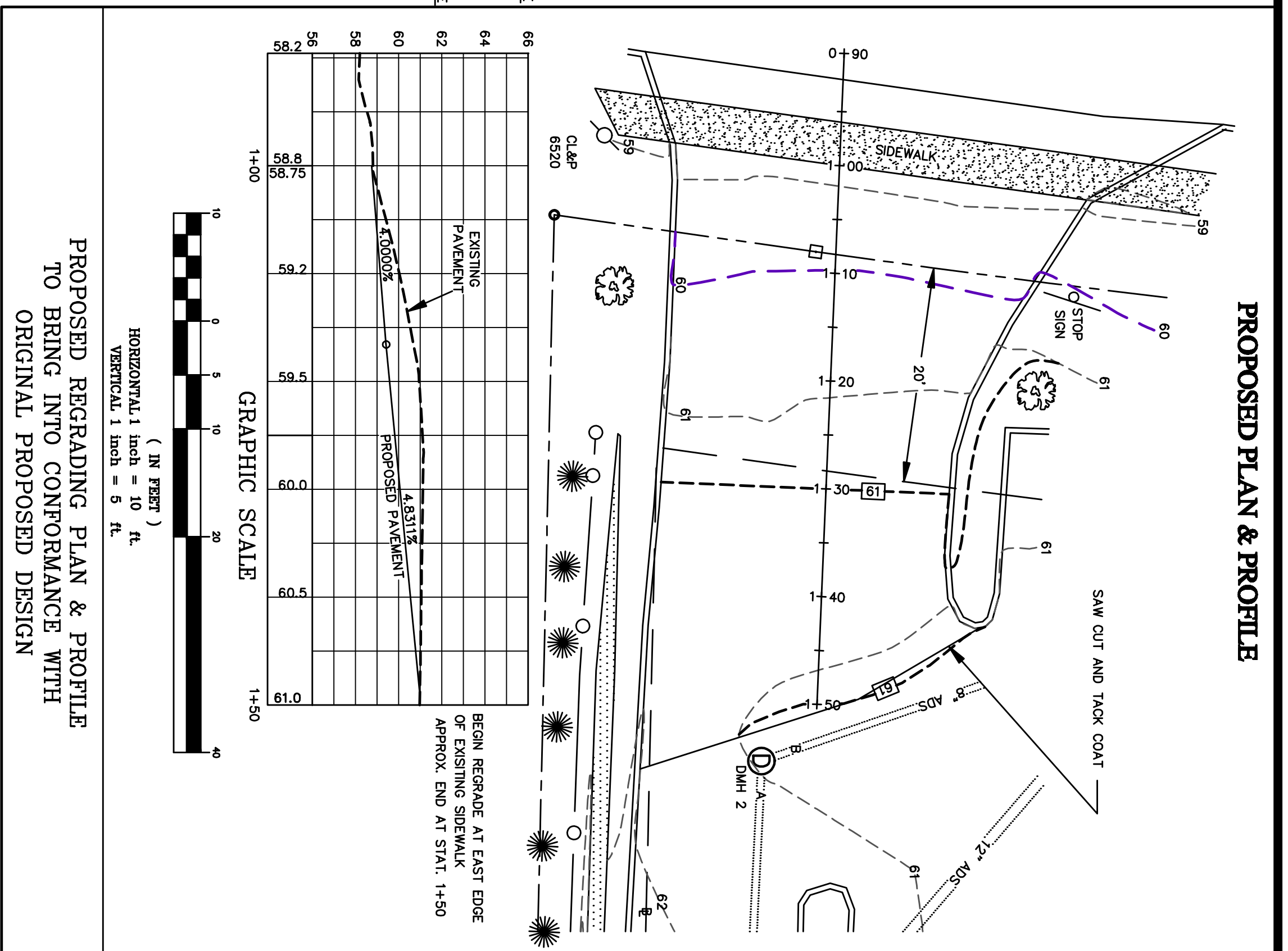
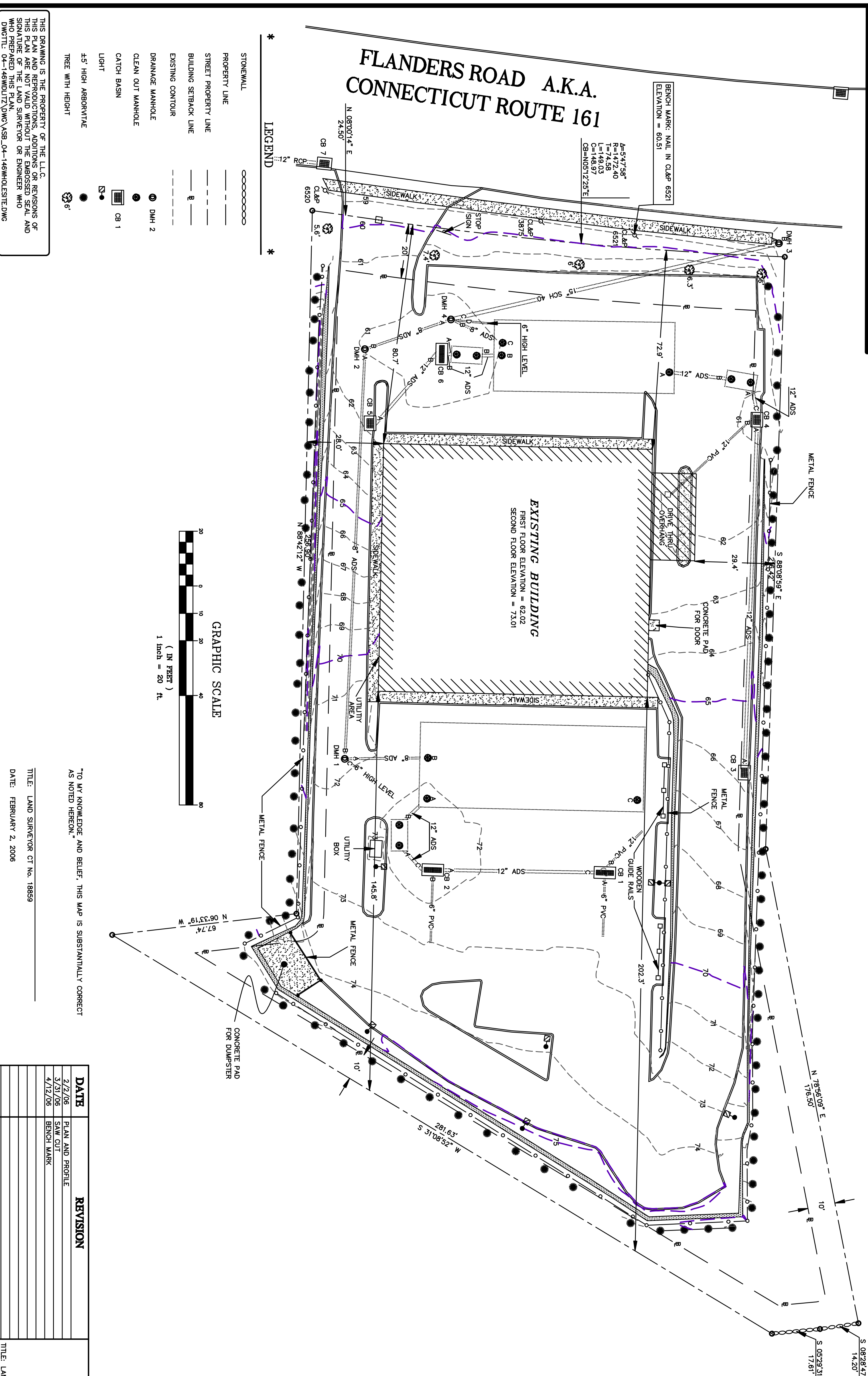
CATCH BASINS			
CB #1	CB #2	CB #3	CB #4
TF = 71.96 INV. A = 70.55 INV. B = 70.16 INV. C = 70.06	TF = 71.20 INV. A = 69.29 INV. B = 69.74 INV. C = 69.13	TF = 65.70 INV. A = 63.42 INV. B = 63.13 INV. C = 62.54	TF = 60.50 INV. A = 58.77 INV. B = 58.63 INV. C = 58.54

DRAINAGE MANHOLES			
DMH #1	DMH #2	DMH #3	DMH #4
TF = 71.72 INV. A = 64.47 INV. B = 64.44 INV. C = 64.95	TF = 60.95 INV. A = 56.23 INV. B = 56.74 INV. C = 64.95	TF = 57.38 INV. A = 54.23 INV. B = 54.12 INV. C = 55.81	TF = 60.76 INV. A = 55.96 INV. B = 55.96 INV. C = 55.31

OIL SEPARATOR TANKS					
TANK 1 M.H. A	TANK 1 M.H. B	TANK 2 M.H. A	TANK 2 M.H. B	TANK 3 M.H. A	TANK 3 M.H. B
TF = 71.76 INV. A = 68.76 INV. C = 68.41	TF = 71.76 INV. B = 68.44 INV. C = 68.41	TF = 61.17 INV. A = 58.49 INV. B = 58.08 INV. C = 58.17	TF = 61.13 INV. A = 58.49 INV. B = 58.08 INV. C = 58.17	TF = 60.68 INV. A = 58.68 INV. B = 58.31 INV. C = 58.31	TF = 60.71 INV. A = 58.68 INV. B = 58.31 INV. C = 58.31

FRONT GALLERIES		
FRONT GALLERIES M.H. A	FRONT GALLERIES M.H. A	FRONT GALLERIES M.H. A
TF = 61.15 INV. A = 56.97 BOTTOM = 56.41	TF = 61.05 INV. B = 56.97 BOTTOM = 56.17	TF = 61.02 INV. C = 56.97 BOTTOM = 56.36

BACK GALLERIES		
BACK GALLERIES M.H. A	BACK GALLERIES M.H. A	BACK GALLERIES M.H. A
TF = 71.89 INV. A = 69.96	TF = 72.17 INV. B = 70.03	TF = 72.42 INV. C = 70.06



PROPOSED REGRADING PLAN & PROFILE  
TO BRING INTO CONFORMANCE WITH  
ORIGINAL PROPOSED DESIGN

GENERAL NOTES:

- THIS SURVEY AND MAP HAS BEEN PREPARED IN ACCORDANCE WITH SECTIONS 20-300a-1 THRU 20-300-20 OF THE REGULATIONS OF CONNECTICUT STATE AGENCIES - "MINIMUM STANDARDS FOR SURVEYS AND MAPS IN THE STATE OF CONNECTICUT ENACTED BY THE CONNECTICUT GENERAL ASSEMBLY IN SENATE BILL NO. 100 AND HOUSE BILL NO. 100, PUBLIC ACT 05-20, AS AMENDED BY SENATE BILL NO. 100 AND HOUSE BILL NO. 100, PUBLIC ACT 05-20, TO ANY KNOWLEDGE AND BELIEF, THIS MAP IS SUBSTANTIALLY CORRECT AS NOTED HEREON.
- MAP REFERENCE:
  - PERIMETER SURVEY MAP, PREPARED FOR DONALD J. SHERMAN OF 305 AND 307 FLANDERS ROAD - CT, ROUTE 161, EAST LIME, CONNECTICUT. SCALE: 1"=20'. DATED 09-16-04.
  - PROPERTY SURVEY MAP, PREPARED FOR GARY WOLITZ AND RICHARD D. KARSIWASKI, OF 305 AND 307 FLANDERS ROAD - CT, ROUTE 161, EAST LIME, CONNECTICUT. SCALE: 1"=20'. DATED 09-16-04.
  - "PERIMETER SURVEY MAP, MAP SHOWING LAND RELEASE TO DONALD J. SHERMAN, TOWN OF EAST LIME, BY THE STATE OF CONNECTICUT, DEPARTMENT OF TRANSPORTATION, CONNECTICUT STATE HIGHWAY INTERCHANGE 58, SCALE: 1"=20', ADDRESS 6, 2003, TOWN NO. 44, SHEET NO. 1 OF 1."

TO MY KNOWLEDGE AND BELIEF, THIS MAP IS SUBSTANTIALLY CORRECT AS NOTED HEREON.

TITLE: LAND SURVEYOR CT No. 18859  
DATE: FEBRUARY 2, 2006

DATE	REVISION
2/2/06	PLAN AND PROFILE
3/31/06	SAW CUT
4/12/06	BENCH MARK

PLAN SHOWING  
ASBUILT LOCATION OF  
**BUILDING & DRAINAGE SYSTEM**  
PROPERTY OF  
**EAST LYME COMMONS LLC**  
303-307 FLANDERS ROAD  
A.K.A.  
CONNECTICUT ROUTE 161  
EAST LYME, CONNECTICUT

SCALE: 1" = 20'  
DATE: FEBRUARY 2, 2006  
JOB NO. 04-146

**GERWICK - MERREN L.L.C.**  
P.O. BOX 539 1020 HARTFORD TURNPIKE  
WATERFORD, CONNECTICUT 06385  
TEL. (860)442-2201 FAX. (860)442-2205